

# Technical Data Sheet

## SL-D

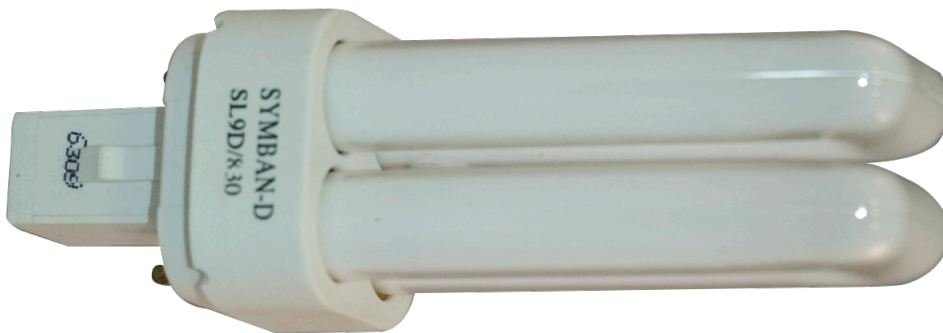
### Double-tube 2-Pin Plug-in Compact Fluorescent Lamps



#### Technical/Electrical Data & Physical Characteristics

Item Number	Description	Wattage	Bulb	Life	Base	CRI	Light Output	Colour Temperature	Bulb Diameter	M.O.L.	Case Qty.
G12000-003	SL9D/827	9W	2xT4	10,000 hrs	G23-2	82	525 lm	2700K	27mm	105mm	50
G12020-003	SL9D/830	9W	2xT4	10,000 hrs	G23-2	82	525 lm	3000K	27mm	105mm	50
G12040-003	SL9D/835	9W	2xT4	10,000 hrs	G23-2	82	525 lm	3500K	27mm	105mm	50
G12060-003	SL9D/841	9W	2xT4	10,000 hrs	G23-2	82	525 lm	4100K	27mm	105mm	50
G12080-003	SL9D/865	9W	2xT4	10,000 hrs	G23-2	82	525 lm	6500K	27mm	105mm	50
G12100-003	SL13D/827	13W	2xT4	10,000 hrs	GX23-2	82	900 lm	2700K	27mm	116mm	50
G12120-003	SL13D/830	13W	2xT4	10,000 hrs	GX23-2	82	900 lm	3000K	27mm	116mm	50
G12140-003	SL13D/835	13W	2xT4	10,000 hrs	GX23-2	82	900 lm	3500K	27mm	116mm	50
G12160-003	SL13D/841	13W	2xT4	10,000 hrs	GX23-2	82	900 lm	4100K	27mm	116mm	50
G12170-003	SL13D/850	13W	2xT4	10,000 hrs	GX23-2	82	900 lm	5000K	27mm	116mm	50
G12180-003	SL13D/865	13W	2xT4	10,000 hrs	GX23-2	82	900 lm	6500K	27mm	116mm	50
G12200-003	SL18D/827	18W	2xT4	10,000 hrs	G24d-2	82	1,200 lm	2700K	27mm	152mm	50
G12220-003	SL18D/830	18W	2xT4	10,000 hrs	G24d-2	82	1,200 lm	3000K	27mm	152mm	50
G12240-003	SL18D/835	18W	2xT4	10,000 hrs	G24d-2	82	1,200 lm	3500K	27mm	152mm	50
G12260-003	SL18D/841	18W	2xT4	10,000 hrs	G24d-2	82	1,200 lm	4100K	27mm	152mm	50
G12400-003	SL26D/827	26W	2xT4	10,000 hrs	G24d-3	82	1,800 lm	2700K	27mm	173mm	50
G12420-003	SL26D/830	26W	2xT4	10,000 hrs	G24d-3	82	1,800 lm	3000K	27mm	173mm	50
G12440-003	SL26D/835	26W	2xT4	10,000 hrs	G24d-3	82	1,800 lm	3500K	27mm	173mm	50
G12460-003	SL26D/841	26W	2xT4	10,000 hrs	G24d-3	82	1,800 lm	4100K	27mm	173mm	50
G12480-003	SL26D/865	26W	2xT4	10,000 hrs	G24d-3	82	1,800 lm	6500K	27mm	173mm	50

#### Certifications



**TCLP**  
COMPLIANT



**Symban Lighting Corp.**  
99 First Gulf Blvd. Brampton, ON  
T. 905.450.5999 | F. 905.450.6665

All specifications are subject to change without notice. Actual performance may vary depending on operating conditions.