

# Technical Data Sheet

## Jupiter<sup>®</sup> -1



### Description

These high efficiency medium wallpak fixtures can be used for outdoor wall mount applications, including parking areas, loading docks, security lighting, waterfronts, recreational areas, and perimeter lighting. The functional design includes models that range from 50W - 175W metal halide or 50W - 150W high pressure sodium.

### Construction

The housing is formed of die-cast aluminum and includes ½" conduit entries on the top (1) and sides (2). The side hinged door includes a rubber gasket.

### Finish

The housing is finished in a durable polyester coat, in bronze or white colours.



### Diffuser

The fixture features a specular pure anodized aluminum reflector inside a prismatic glass lens.

### Electrical

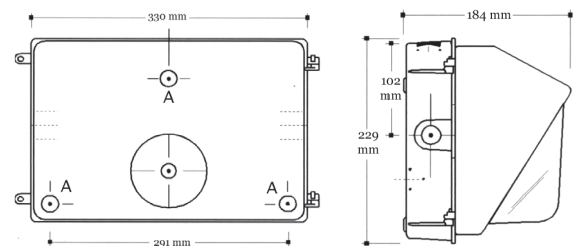
All models are CSA approved for outdoor use, and are wired with UL listed or CSA approved CWA high power factor or reactor type normal power factor ballasts for voltages ranging from 120V - 600V, 60 Hz operation.

### Options

Options include high power factor capacitors (for 120V NPF reactor ballasts), photocontrols, and wire guards.

### Ordering Information

| Model       | Lamp Type  | Voltage | Optional HPF Capacitor | Optional Photocontrol      | Housing Colour  |
|-------------|------------|---------|------------------------|----------------------------|-----------------|
| Jupiter - 1 | 50W - MH   | 120V    | HPF                    | PC IB<br>(internal button) | Bronze<br>White |
|             | 70W - MH   | 208V    |                        |                            |                 |
|             | 100W - MH  | 240V    |                        |                            |                 |
|             | 150W - MH  | 277V    |                        |                            |                 |
|             | 175W - MH  | 347V    |                        |                            |                 |
|             | 35W - HPS  | 480V    |                        | PC ES<br>(external swivel) |                 |
|             | 50W - HPS  | 600V    |                        |                            |                 |
|             | 70W - HPS  |         |                        |                            |                 |
|             | 100W - HPS |         |                        |                            |                 |
|             | 150W - HPS |         |                        |                            |                 |



Made in Canada



**Symban Lighting Corp**  
99 First Gulf Blvd. Brampton, ON  
T. 905.450.5999 | F. 905.450.6665